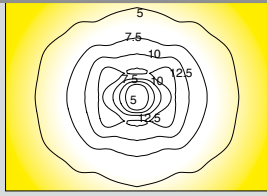
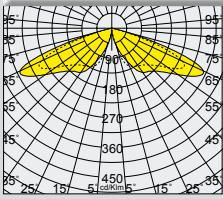




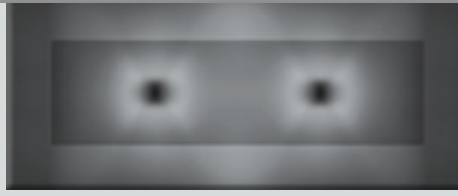




**3350 Garda 1 - wide beam**



Example of project with art. 3350



**Housing and arms:** pressed in die-cast aluminium and designed with a very small surface exposed to wind.

**Optics:** Optics made of PMMA with high temperature resistance and UV rays.

**Pole connection:** pressed in die-cast aluminium. Suited for poles with a diameter 63-60mm.

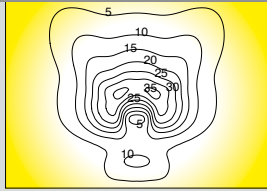
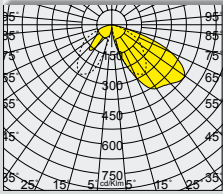
**Diffuser:** extra-clear tempered glass, 4 mm thick, resistant to thermal shocks and impacts (UNI-EN 12150-1: 2001).

**Coating:** In different stages. Grey epoxy cationic electrocoating, resistant to corrosive and saline environments. UV stabilized priming using graphite grey acrylic resin.

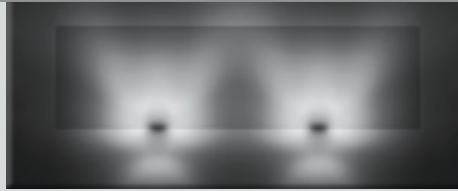
**Equipment:** nylon wiring plate 30% fibre glass complete with connector for mains connection and for LED module. Automatic temperature control inside the device with automatic resetting. With dedicated electronic device to protect the LED module. Equipped with an air-circulation valve.

**Energy-saving:** the possibility to choose the correct drive current for LEDs will allow you to have the right power under specific design conditions, and also help you deal with maintenance and retrofitting problems. Using a lower current will improve the efficiency of fixtures and therefore increase energy savings, whilst a higher current will result in a higher light flux so that you can reduce the number of fixtures.

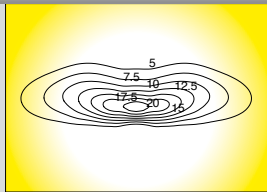
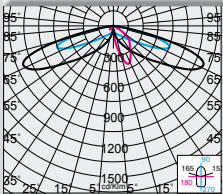
**3351 Garda 2 - asymmetric**



Example of project with art. 3351



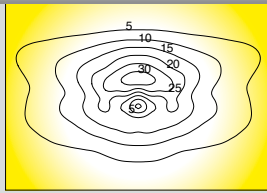
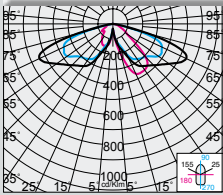
**3352 Garda 3 - cycleways**



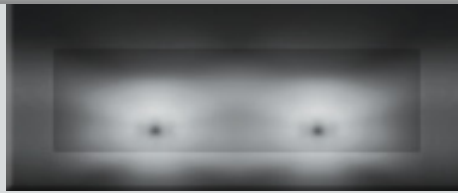
Example of project with art. 3352



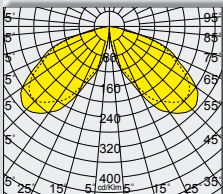
**3353 Garda 4 - cycleways + residential amenities**



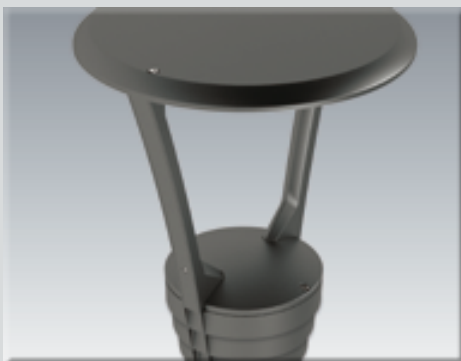
Example of project with art. 3353



**3355 Garda 5 - wide beam**



Example of project with art. 3355



**Table for the various options for managing the supply point**

1-10V dimming	Virtual midnight	PLC remote control	Wi-Fi remote control (to be agreed upon)
Adjustment range from 10%-100% with 1-10V	Stand alone system with reduction of luminous flux	Point-to-point and system management and diagnosis system	Point-to-point and system management and diagnosis system with Wi-Fi system
Ordered with sub-code -12	Ordered with sub-code -30	Ordered with sub-code -0078	on request



60/67

ZONA 1

3351

new

RG0

40°C / -30°C

U.V.



\* IP66IK08

Ø400

605

16 LED

32 LED

3351 Garda 2 - asymmetric					
		CLD CELL		W	LED (Tj=25°C)
wattage (700mA)	colour	weight	code		K - ølm 700mA - CRI
LED	graphite	5.70	330520-00	32	4000K - <b>4670lm</b> - CRI 70
LED	graphite	5.90	330521-00	64	4000K - <b>9340lm</b> - CRI 70

**On request:** possibility for the various options for managing the supply point (see table on p. 7).

**LED:** Power factor  $\geq 0.9$ .  
Luminous flux maintenance 70% 50000h (L70B50)

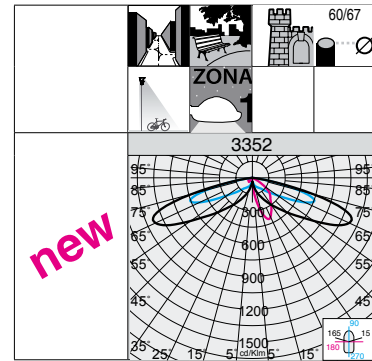
	Electrical Power	n.LED	W	ølm
On request	530mA	16	23	3700lm
		32	46	7400lm

\* IP66IK08

Ø400  
605

8 LED

16 LED



- 
- 
- 
- 
- 
- 

3352 Garda 3 - cycleways				
		CLD CELL		LED (Tj=25°C)
wattage (700mA)	colour	weight	code	W
LED	graphite	5.60	330530-00	16
LED	graphite	5.70	330531-00	32

LED (Tj=25°C)  
K - ølm 700mA - CRI  
4000K - **2235lm** - CRI 70  
4000K - **4670lm** - CRI 70

**On request:** possibility for the various options for managing the supply point (see table on p. 7).

**LED:** Power factor ≥0.9.  
Luminous flux maintenance  
70% 50000h (L70B50)

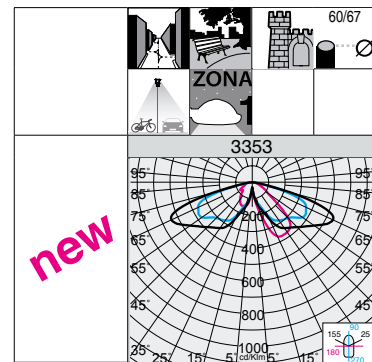
	Electrical Power	n.LED	W	ølm
On request	530mA	8	12	1850lm
		16	23	3700lm

\* IP66IK08

Ø400  
605

16 LED

32 LED



- 
- 
- 
- 
- 
- 

3353 Garda 4 - cycleways + residential amenities				
		CLD CELL		LED (Tj=25°C)
wattage (700mA)	colour	weight	code	W
LED	graphite	5.70	330540-00	32
LED	graphite	5.90	330541-00	64

LED (Tj=25°C)  
K - ølm 700mA - CRI  
4000K - **4670lm** - CRI 70  
4000K - **9340lm** - CRI 70

**On request:** possibility for the various options for managing the supply point (see table on p. 7).

**LED:** Power factor ≥0.9.  
Luminous flux maintenance  
70% 50000h (L70B50)

	Electrical Power	n.LED	W	ølm
On request	530mA	16	23	3700lm
		32	46	7400lm



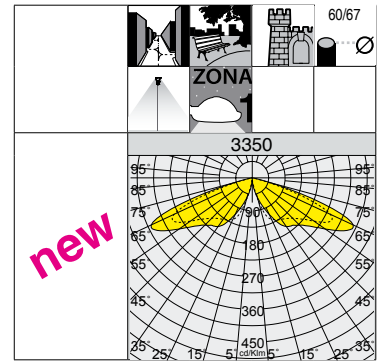
\* IP66IK08

Ø400

605

16 LED

32 LED



- 
- 
- 
- 
- 
- 

3350 Garda 1 - wide beam				
		CLD CELL		LED (Tj=25°C)
wattage (700mA)	colour	weight	code	W
LED	graphite	5.70	330510-00	32
LED	graphite	5.90	330511-00	64

**LED (Tj=25°C)**  
K - ølm 700mA - CRI  
4000K - **4670lm** - CRI 70  
4000K - **9340lm** - CRI 70

**On request:** possibility for the various options for managing the supply point (see table on p. 7).

**LED:** Power factor ≥0.9.  
Luminous flux maintenance  
70% 50000h (L70B50)

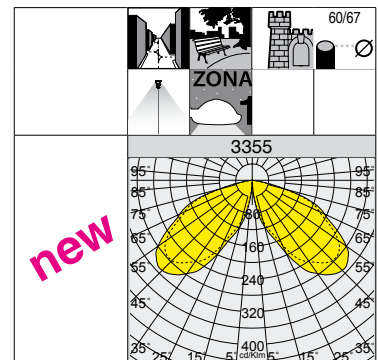
	Electrical Power	n.LED	W	ølm
<b>On request</b>	530mA	16	23	3700lm
		32	46	7400lm

\* IP66IK08

Ø400

605

24 LED



- 
- 
- 
- 
- 
- 

3355 Garda 5 - wide beam				
		CLD CELL		LED (Tj=25°C)
wattage (700mA)	colour	weight	code	W
LED	graphite	5.80	330550-00	47

**LED (Tj=25°C)**  
K - ølm 700mA - CRI  
4000K - **6792lm** - CRI 70

**On request:** possibility for the various options for managing the supply point (see table on p. 7).

**LED:** Power factor ≥0.9.  
Luminous flux maintenance  
70% 60000h (L70B20)